

REFRIGERATOR MANUFACTURER
Turbo air

WARRANTY 2 YEARS
PARTS & LABOUR

BEST QUALITY PRODUCTS
IN THE WORLD



Call us today on **1300 362 596** or
Visit us at **www.turboairaus.com.au**

ABOUT COMPANY

RELIABILITY

High Tech, Digitally Controlled System

Uniform temperature throughout the unit for reliable food preservation. System helps to ensure food safety and protects working components. Alarm sounds when the door is left opened. Display lights when the fan is operating or if the system is defrosting.

Five Star Quality Control

All products must pass a rigorous five-point inspection to meet our high quality standards.

DURABILITY

High Quality Stainless Steel Construction

Rust-resistant and easy to clean. Rounded corners to create a safer workplace. Stainless steel shelves (Super Deluxe & Premiere models). Durable, rust-resistant shelf clips. Concealed interior lighting. Foam insulated the full height to compressor area. Over-sized refrigeration system.

ERGONOMICS & CONVENIENCE

Wide Range Recessed Door Handle

Our uniquely equipped 16 in. sturdy door handle enables the operator to clasp the handle easily. Additionally, our door handles provide for effortless opening with a less than 7oz. pressure release system. This will help reduce workplace fatigue.

Bottom mount compressor

The bottom-mount compressor is designed to prevent the need and discomfort of reaching and bending to lower areas, in addition to providing for energy efficiency.

ENVIRONMENTAL FRIENDLY

Foamed-in-Place, CFC Free polyurethane, High Density Cell Insulation

Turbo Air has used Cyclopentane as a new blowing agent for polyurethane foam insulation. Cyclopentane does not contain HFCs (hydro-fluorocarbons) and reduces equivalent CO2 emissions significantly. It has zero ODP (ozone depletion potential) and non GWP (global warming potential) resulting in less environmental impact without compromising performance.

OUTSTANDING ENERGY EFFICIENCY

Turbo Air engineers constantly strive to improve energy efficiency without compromising performance. All Turbo Air's glass merchandisers are MEPS (Minimum Energy Performance Standards) approved and many of them are rated as 'High Energy Efficiency' ensuring minimised energy consumption. Turbo Air is the first in the industry to replace a frame heater with a method of using compressor-produced heat which eliminates any unnecessary energy consumption while providing efficient freezing performance.

PRODUCT FEATURES

Fan cooling
refrigeration
system



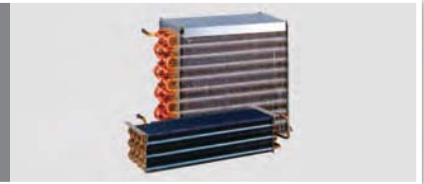
Maximized
and convenient
storage



Quality control
international
standard



Evaporators
and condensers



High efficient
compressor



High density
cell insulation



All copper
refrigeration
system



Digitally
controlled
temperature
system



Drain water
evaporation
system



Interior
LED lighting



Self-closing
and
stay open door



Door
connecting
device



Door lock



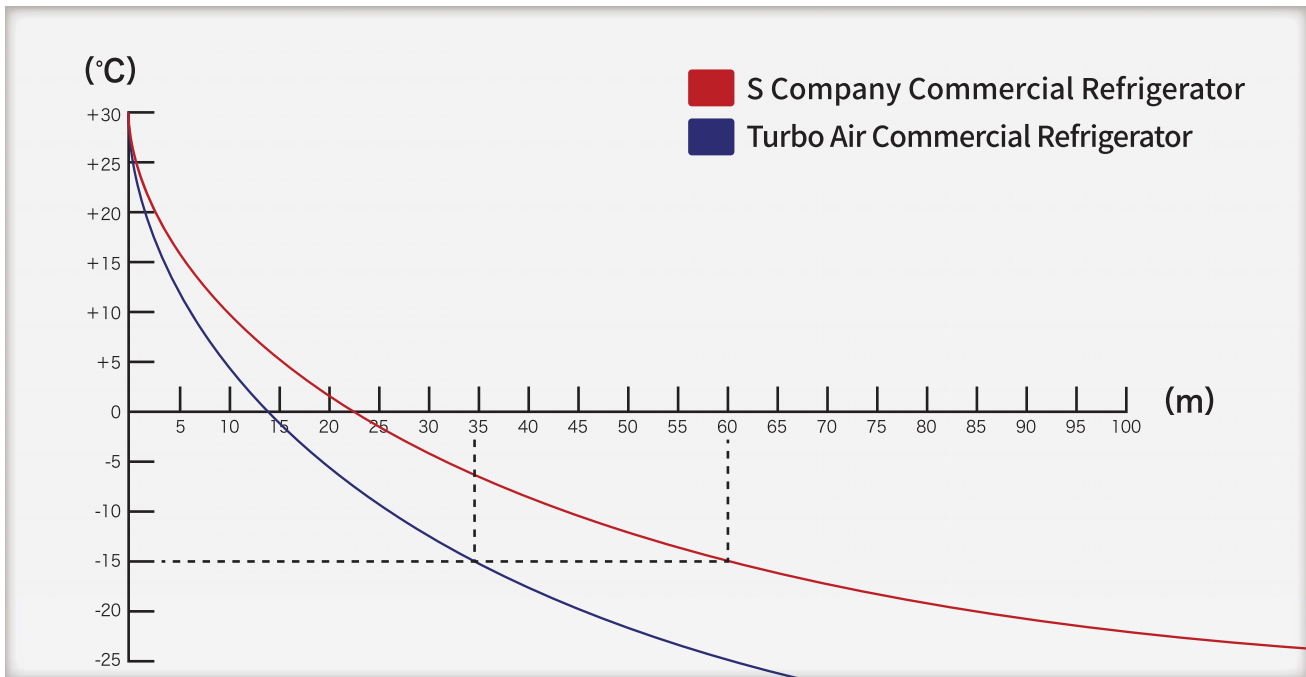
Ergonomic
design



Call us today **1300 362 596** or visit us at www.turboairaus.com.au

ALPHA
CATERING EQUIPMENT

Cooling performance Analysis Table



Drain Water Evaporation System

TURBO AIR

Sanitation

There is no worry of germ being inhaled into refrigerator because no pipe is linked to the ground.

Neatness

It has no influence on outside environment as no drain water will be ejected.

An Ordinary Refrigerator

Sanitation

When opening and closing the door, There can be a quite large pressure difference between in and outside the refrigerator which makes germ inhaled into the refrigerator through drain water pipe.

Neatness

Drain water is ejected directly to the outside floor, being not friend to environment.

KR25-1

KF25-1



KR45-2

KF45-2

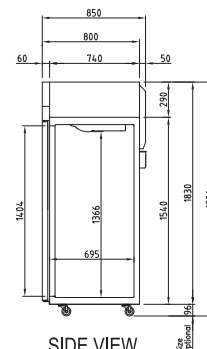
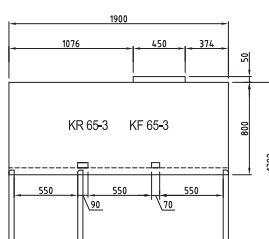
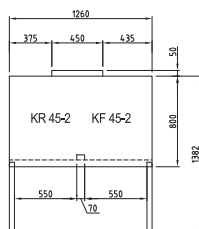
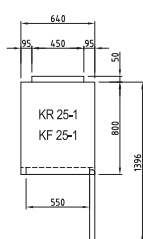


KR65-3

KF65-3



PLAN VIEW



SIDE VIEW

REFRIGERATOR / FREEZER SPEC SHEET

MODEL	KR25-1	KR45-2	KR65-3	KF25-1	KF45-2	KF65-3
Classification	Refrigerator			Freezer		
Cabinet dimension (WxDxH mm)	640x800x1926	1260x800x1926	1900x800x1926	640x800x1926	1260x800x1926	1900x800x1926
Capacity (Liters)	574	1215	1876	574	1215	1876
Inner Temperature	1°C~8°C			-21°C~-12°C		
Ambient Temperature	40°C			38°C		
Doors	1	2	3	1	2	3
# of shelves	3	6	9	3	6	9
Refrigerant	R-134a			R-404a		
Compressor (Hp)	1/4	1/3	3/4	2/3	1	3/4x2
Cooling Type	Fan cooling type					
Insulation Type	Polyurethane/Cyclopentane+CFC Free					
Temperature Control Type	Digital					
Amps (A)	2.8	3.5	6	3.5	5.3	8.5
Voltage (V/Hz/Ph)	240V 50Hz 1Ph					
Power (W)	314	366	732	496	774	1346
Weight (Kg)	77	142	167	80	142	167

TOP MOUNT REFRIGERATOR / FREEZER

KR25-2

KF25-2



KR45-4

KF45-4

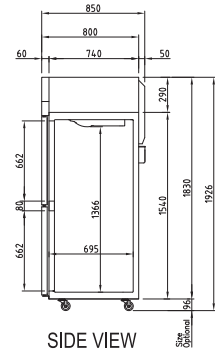
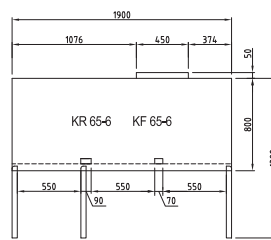
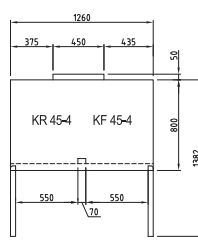
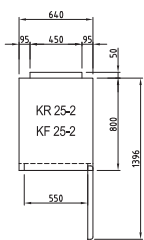


KR65-6

KF65-6



PLAN VIEW



SIDE VIEW

REFRIGERATOR / FREEZER SPEC SHEET

MODEL	KR25-2	KR45-4	KR65-6	KF25-2	KF45-4	KF65-6
Classification	Refrigerator			Freezer		
Cabinet dimension (WxDxH mm)	640x800x1926	1260x800x1926	1900x800x1926	640x800x1926	1260x800x1926	1900x800x1926
Capacity (Liters)	572	1210	1868	572	1210	1868
Inner Temperature	1°C~8°C			-21°C~-12°C		
Ambient Temperature	40°C			38°C		
Doors	2	4	6	2	4	6
# of shelves	3	6	9	3	6	9
Refrigerant	R-134a			R-404a		
Compressor (Hp)	1/4	1/3	3/4	2/3	1	3/4x2
Cooling Type	Fan cooling type					
Insulation Type	Polyurethane/ Cyclopentane+ CFC Free					
Temperature Control Type	Digital					
Amps (A)	2.8	3.5	6	3.5	5.3	8.5
Voltage (V/Hz/Ph)	240V 50Hz 1Ph					
Power (W)	314	366	732	496	774	1346
Weight (Kg)	77	142	167	80	142	167

Call us today **1300 362 596** or visit us at www.turboairaus.com.au

ALPHA
CATERING EQUIPMENT

TOP MOUNT DUAL TEMP REFRIGERATOR / FREEZER

REFRIGERATOR MANUFACTURER
Turbo air

KRF25-2



KRF45-2

KRF45-4H

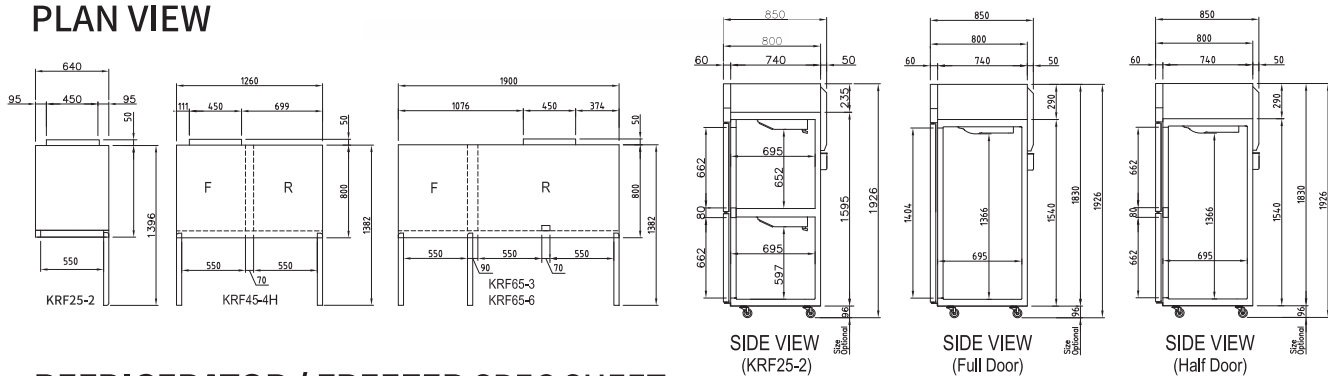


KRF65-3

KRF65-6



PLAN VIEW



REFRIGERATOR / FREEZER SPEC SHEET

MODEL	KRF25-2		KRF45-2 / KRF45-4H		KRF65-3 / KRF65-6	
	Refrigerator	Freezer	Refrigerator	Freezer	Refrigerator	Freezer
Classification	Refrigerator / Freezer					
Cabinet dimension (WxDxH mm)	640x800x1926		1260x800x1926		1900x800x1926	
Capacity (Liters)	242	222	576	576	575	1235
Inner Temperature	1°C~8°C	-21°C~-12°C	1°C~8°C	-21°C~-12°C	1°C~8°C	-21°C~-12°C
Ambient Temperature	38°C					
Doors	2		2 / 4		3 / 6	
# of shelves	1	1	3	3	6	3
Refrigerant	R-134a		R-134a	R-404a	R-134a	R-404a
Compressor (Hp)	1/3		1/3	2/3	1/3	2/3
Cooling Type	Fan cooling type					
Insulation Type	Polyurethan/ Cyclopentane+ CFC Free					
Temperature Control Type	Digital					
Amps (A)	3.5		4.5		5.5	
Voltage (V/Hz/Ph)	240V 50Hz 1Ph					
Power (W)	366		732		732	
Weight (Kg)	85		152		177	

UNDER COUNTER SIDE PREP TABLE REFRIGERATOR / FREEZER

REFRIGERATOR MANUFACTURER
Turbo air

KUR9-1 **KUF9-1**



KUR12-2 **KUF12-2**



KUR15-2 **KUF15-2**



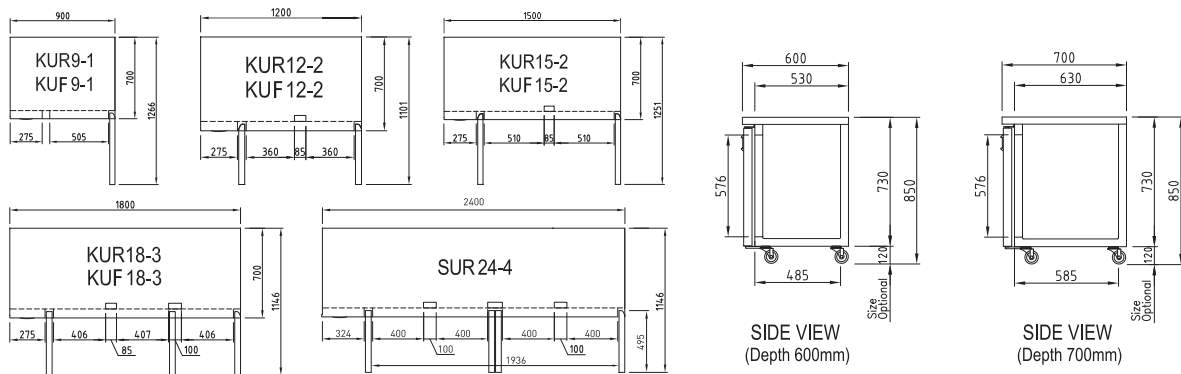
KUR18-3 **KUF18-3**



SUR24-4 **SUF24-4**



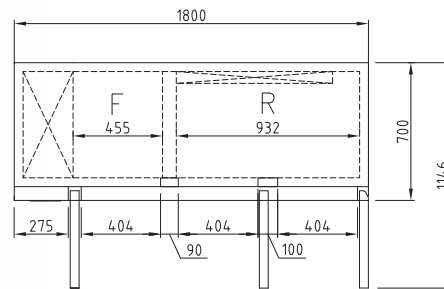
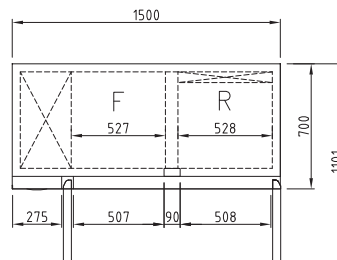
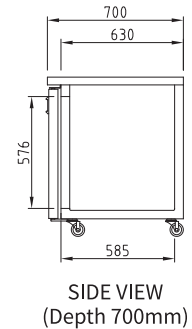
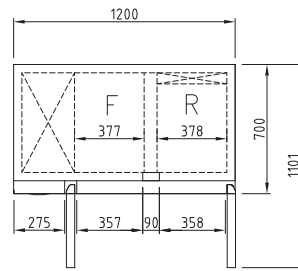
PLAN VIEW



REFRIGERATOR / FREEZER SPEC SHEET

MODEL	KUR9-1 KUF9-1	KUR12-2 KUF12-2	KUR15-2 KUF15-2	KUR18-3 KUF18-3	SUR24-4 SUF24-4
Classification	Refrigerator				
	Freezer				
Cabinet dimension (WxDxH mm)	900x700(600)x850	1200x700(600)x850	1500x700(600)x850	1800x700(600)x850	2400x700x850
Capacity (Liters)	198	311	425	538	600
Inner Temperature	1°C~8°C				
Ambient Temperature	-21°C~-12°C				
Doors	1	2	2	3	4
# of shelves	1	2	2	3	4
Refrigerant	R-134a				
Compressor (Hp)	R-134a 1/4	R-404a 1/4	R-404a 1/4	R-404a 1/3	R-404a 1/3
Cooling Type	Fan cooling type				
Insulation Type	Polyurethane / Cyclopentane + CFC Free				
Temperature Control Type	Digital				
Amps (A)	2.3	2.5	2.5	3	3.2
Voltage (V/Hz/Ph)	2.5	3	4	4.4	
Power (W)	240V 50Hz 1Ph				
Weight (Kg)	314	314	314	366	440
	72	84	93	109	145

UNDER COUNTER SIDE PREP TABLE REFRIGERATOR / FREEZER



REFRIGERATOR / FREEZER SPEC SHEET

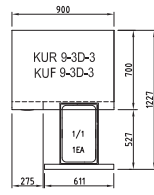
MODEL	KURF12-2		KURF15-2		KURF18-3	
	Refrigerator	Freezer	Refrigerator	Freezer	Refrigerator	Freezer
Classification	Refrigerator / Freezer					
Cabinet dimension (WxDxH mm)	1200x700x850		1500x700x850		1800x700x850	
Capacity (Liters)	121	136	171	191	151	314
Inner Temperature	1°C~8°C	-21°C~-12°C	1°C~8°C	-21°C~-12°C	1°C~8°C	-21°C~-12°C
Ambient Temperature	38°C					
Doors	2		2		3	
# of shelves	1	1	1	1	1	2
Refrigerant	R-134a		R-404a		R-404a	
Compressor (Hp)	1/3		3/4		3/4	
Cooling Type	Fan cooling type					
Insulation Type	Polyurethane/ Cyclopentane+ CFC Free					
Temperature Control Type	Digital					
Amps (A)	3		4.35		4.4	
Voltage (V/Hz/Ph)	240V 50Hz 1Ph					
Power (W)	316		316		366	
Weight (Kg)	92		101		120	

Call us today **1300 362 596** or visit us at www.turboairaus.com.au

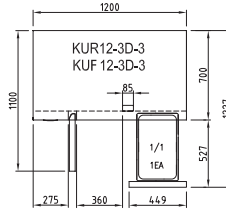
ALPHA
CATERING EQUIPMENT

UNDER COUNTER DRAWER REFRIGERATOR / FREEZER

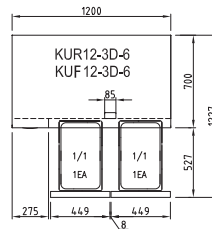
KUR9-3D-3
KUF9-3D-3



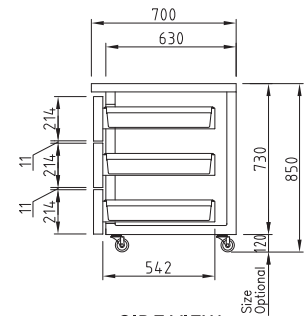
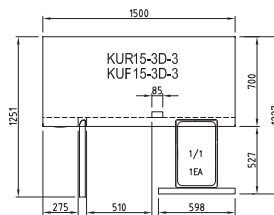
KUR12-3D-3
KUF12-3D-3



KUR12-3D-6
KUF12-3D-6



KUR15-3D-3
KUF15-3D-3



SIDE VIEW
(Depth 700mm)

OPTION

2 Drawer Available



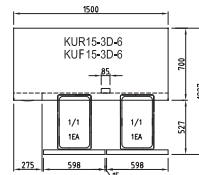
REFRIGERATOR / FREEZER SPEC SHEET

MODEL	KUR9-3D-3	KUR12-3D-3	KUR12-3D-6	KUR15-3D-3
	KUF9-3D-3	KUF12-3D-3	KUF12-3D-6	KUF15-3D-3
Classification	Refrigerator			
	Freezer			
Cabinet dimension (WxDxH mm)	900x700x850	1200x700x850	1200x700x850	1500x700x850
Capacity (Liters)	198	311	311	425
Inner Temperature	1°C~8°C			
	-21°C~-12°C			
Ambient Temperature	38°C			
Doors	0	1	0	1
# of shelves	0	1	0	1
Refrigerant	R-134a			
	R-134a	R-134a	R-134a	R-404a
Compressor (Hp)	1/4	1/4	1/4	1/4
	1/3	1/3	1/3	3/4
Cooling Type	Fan cooling type			
Insulation Type	Polyurethane / Cyclopentane + CFC Free			
Temperature Control Type	Digital			
Amps (A)	2.3	2.5	2.5	2.5
	3	3.3	3.3	4.4
Voltage (V/Hz/Ph)	240V 50Hz 1Ph			
Power (W)	314	314	314	314
	366	366	366	366
Weight (Kg)	84	97	106	107

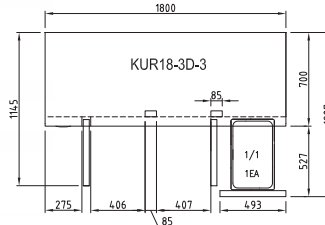
Call us today 1300 362 596 or visit us at www.turboairaus.com.au

ALPHA
CATERING EQUIPMENT

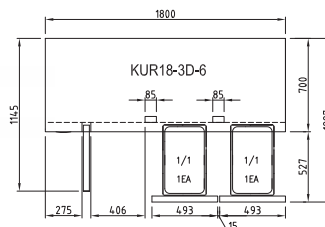
KUR15-3D-6
KUF15-3D-6



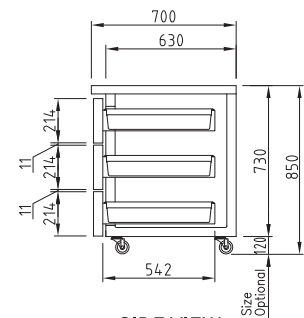
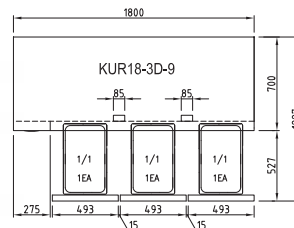
KUR18-3D-3



KUR18-3D-6



KUR18-3D-9



SIDE VIEW
(Depth 700mm)

REFRIGERATOR / FREEZER SPEC SHEET

MODEL	KUR15-3D-6 KUF15-3D-6	KUR18-3D-3	KUR18-3D-6	KUR18-3D-9
Classification	Refrigerator			
	Freezer			
Cabinet dimension (WxDxH mm)	1500x700x850	1800x700x850	1800x700x850	1800x700x850
Capacity (Liters)	425	538	538	538
Inner Temperature	1°C~8°C			
	-21°C~-12°C			
Ambient Temperature	38°C			
Doors	0	2	1	0
# of shelves	0	2	1	0
Refrigerant	R-134a			
	R-404a			
Compressor (Hp)	1/4 3/4	1/3	1/3	1/3
Cooling Type	Fan cooling type			
Insulation Type	Polyurethane / Cyclopentane + CFC Free			
Temperature Control Type	Digital			
Amps (A)	2.5 4.4	3	3	3
Voltage (V/Hz/Ph)	240V 50Hz 1Ph			
Power (W)	314 366	366	366	366
Weight (Kg)	116	126	135	144

PIZZA TABLE DRAWER REFRIGERATOR

CTPR-44SD-D2



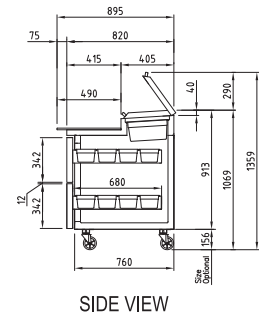
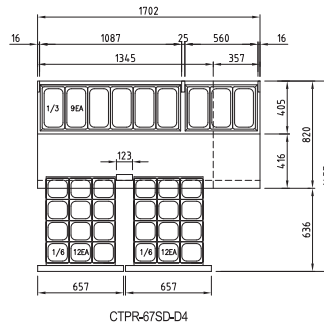
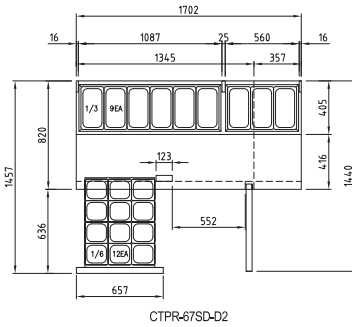
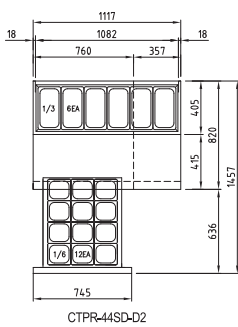
CTPR-67SD-D2



CTPR-67SD-D4



PLAN VIEW



REFRIGERATOR SPEC SHEET

MODEL	CTPR-44-D2	CTPR-67-D2	CTPR-67-D4
Classification	Refrigerator		
Cabinet dimension (WxDxH mm)	1117x820x1069	1702x820x1069	1702x820x1069
Capacity (Liters)	396	566	566
Inner Temperature	1°C~8°C		
Ambient Temperature	40°C		
Doors	0	1	0
Drawers	2	2	4
# of shelves	2	2	4
# of Pans	6	9	9
# of Hood	1	2	2
Refrigerant	R-134a		
Compressor (Hp)	1/3	7/8	7/8
Cooling Type	Fan cooling type		
Insulation Type	Polyurethane/ Cyclopentane+ CFC Free		
Temperature Control Type	Thermostat		
Amps (A)	3.2	6.0	6.0
Voltage (V/Hz/Ph)	240V 50Hz 1Ph		
Power (W)	366	660	660
Weight (Kg)	146	255	260

Call us today **1300 362 596** or visit us at www.turboairaus.com.au

ALPHA
CATERING EQUIPMENT

OUR CLIENTS

REFRIGERATOR MANUFACTURER
Turbo air

FRANCHISE



HOTEL



ALPHA
CATERING EQUIPMENT

Call us today **1300 362 596** or visit us at www.turboairaus.com.au

REFRIGERATOR MANUFACTURER
Turbo air

Alpha Catering Equipment (Head office, Showroom)

Add: 2060-2062 Castlereagh Rd Penrith NSW 2750

Web: www.alphacateringequipment.com.au

Web: www.turboairaus.com.au

Tel: 1300 362 596

Fax: 02 4731 2099

SKIPIO



ISO14001

